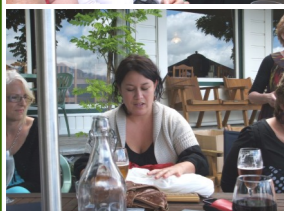


**Staff Christmas Lunch at Moana**



- ◆ West Coast Community Trust for the office computer
- ◆ To the ANZ Foundation for supporting BBBS activities
- ◆ To BCDC for supporting staff training
- ◆ To Police Diversion Scheme for supporting BBBS
- ◆ Thanks to Lorraine, Trevor, Sue, and Rodney for helping with Greymouth Office move

**Social Workers in Schools**

There are 28 children currently on the SWIS role. The Westport Cluster consists of Westport South School, Westport North School, Granity and Waimangaroa Schools.

**Clients:**

- |   |  |
|---|--|
| 12 girls-Aged 7-13 years                  | 16 boys-Aged 7-11 years  |
| * all referred for emotional difficulties | * 14/16 referred for behaviour difficulties                      |
| * 11/12 affected by Family Violence       | * 12/16 affected by Family Violence                              |
| * 5/12 girls are 2 parent families        | * 10/16 boys in single or re constituted families                |
|   | * 10/16 learning difficulties                                    |
|   | * 9/10 (learning difficulties) are single parented/reconstituted |
|   | * 4/10(single parented) are mother raised                        |

What these stats are informing: 1. Mostly all of the children referred to the service are affected by Family Violence.  
 2. A large percentage of the children are living within single or reconstituted families.  
 3. That there is no correlation between behaviour and absenteeism of father/male role models.

**Key social work issues:**

- Parental Separation-Conflict/Family Court proceedings
- Communication within families
- Blended families-dynamics of Alcohol and Drug Use/Abuse in both adults and children
- Parenting: often non-existent supervision of children (inconsistent boundaries)
- Advocacy—health care issues (predominantly)
- Neglect/Abuse
- Social Isolation
- Family Violence
- Poverty
- Bullying
- Transient Families

**What's New?**

Results Base Accountability (RBA): Recently a pilot programme was introduced nationwide. Five SWIS providers were selected to undergo this study. SWIS Westport/Greymouth was one of those with the four other providers from the North Island. Although the results are not officially available yet, initial feedback from parents, teachers and students interviewed are very positive. \* A high percentage of children felt happier and supported with SWIS intervention—this suggests children have an increased sense of belonging and are better able to overcome challenges.  
 \* Parents were positive about the service. Improvements in family communication and “working together as a family” are of significant note.  
 \* Teachers have a high opinion of the professionalism and integrity of the SWIS workers however role clarity is an area for targeting in the relationship between Social Worker and the Schools.

**In Summary:** The “linking” and connecting of children within their families, their families within the schools and wider community is an integral part of the SWIS role. Regular community networking is used to discover how needs within the community can be met is done with clients best interests as paramount. Responding to the varied needs and changing trends can be challenging. However contributing and supporting: encouraging learning, growth and development is unique in its rewards.

# Homebuilders West Coast Trust

## Te Whānau Kaha O Te Tai Poutini

Greymouth Office:  
 P O Box 132  
 33 Guinness Street  
 Greymouth  
 Ph: 03 768 6665

Email: greyoffice@homebuildersgrey.co.nz



Westport Office:  
 P O Box 388  
 52 Mill Street  
 Westport  
 Ph: 03 788 8065  
 Fax: 03 788 8066

Email: office@homebuilderswpt.co.nz

April 2011

[www.homebuilderswpt.co.nz](http://www.homebuilderswpt.co.nz)

Issue 6

### Message from the Chief Executive



Lorraine

Tena koutou katoa

We have been constantly thinking of the people in Christchurch, especially since February 22. Our thoughts are with you all throughout this tragic time. You have experienced a trauma that is unbelievable, hard to comprehend, totally unfair and emotionally and physically devastating.

As we continue to live with the aftershocks and hear the overwhelming stories of grief, loss, frustration, anger and helplessness; we send our heartfelt best wishes for the future as you rebuild and bounce back.

Thankfully hope, resilience, people taking care of each other, strangers helping strangers are strengths the people of Christchurch, New Zealand and indeed people around the world are demonstrating with great gusto.

I was talking to a friend in Christchurch yesterday who is usually energetic, positive and outgoing; it was a sharp reminder of the emotional impact of the earthquake to hear her sounding defeated and worn out.

We have been informed of the loss of two of our contracts:- the Te Rito Family Violence co-ordinator for the Buller and the Child Advocate for Children who Witness or Experience Family Violence. These two contracts will cease from 30 June 2011.

We are so very sad to lose these programmes as the projects, effort, commitment and passion for working towards a zero tolerance of family violence and being a voice for our children, has been absolutely outstanding. We will acknowledge Rehia and Jade in our next newsletter and share with you the highlights of their achievements.

Kia tuupato taahau

Ka Kite Ano

Lorraine Scanlon



Moana

### Inside this issue:

Message from Chief Executive	1
Te Rito Family Violence Network	2
BBBS—Poem by a Young Person	2
Swis Programmes	2
Children's Day	3
Thank you	4
Swis	4
Staff Christmas Photo's	4

### Special points of interest:

- Our Services
- Thank you
- Poem by a Young Person

**Te Rito Family Violence Network**

White Ribbon Campaign  
2010



The national White Ribbon campaign is supported annually by the Buller Te Rito Family Violence Network. In November 2010 the Network donated copies of the book 'Women Can't Hear What Men Don't Say: Destroying Myths, Creating Love' to the Westport and Reefton public libraries. Members of the network also distributed 2000 white ribbons into the community.

There was a White Ribbon display at the Sue Thomson-Casey Memorial library, and a street march was held where members of the community marched to show they're against violence towards women.

We also took part in the national 'Pledge Project' by gathering signatures on a fabric panel which was then sewn together with other panels from around the country to form a giant white ribbon. The ribbon was then displayed at Starship Hospital in Auckland.

**SWIS Programmes**



**Outdoor Leadership Day**

An excited group of 10 students from Waimangaroa and Granity School joined together with instructors and facilitators to be challenged and supported in a safe outdoor environment.

They worked together to gain, enhance and strengthen the senior students leadership qualities and skills.

The activities were a range of experiences and group tasks that aimed to help build effective communication skills, build self-confidence, challenge/push individual comfort zones and identify and build on leadership potential in all of the participants.

This was a fun filled day at Charleston, with Rock Climbing and Abseiling being a favourite.

**Big Brothers Big Sisters Poem from a Young Person**

**No More Bullies Bullying**

*Roses are red violets are blue  
I want to be friends with you  
Roses are red violets are blue  
Daisies and Daffodils are yellow  
Please don't make me feel shallow  
Apples are juicy and red  
I don't want to be misled  
Please be nice to me instead  
Don't push me on the floor  
My feelings are already sore  
I don't want to be bullied any more  
Bullying no more*

**By Georgia Aldridge**



**Children's Day—Thank you**

**To our major sponsors/contributors**

- Mike and Helen Bygate (MBC Directors)
- Mathew McManus (Rainbow Cake Kitchen)
- Buller District Council
- Westport New World
- West Coast Te Rito Family Violence Governance Group
- Westport Lions Club - Volunteers
- Graeme Walsh—Landmark
- Kawatiri Maori Women's Welfare League
- Gibson's Toyworld
- Phil Woods Menswear
- Solid Energy Centre

**To the organising committee**

- Sylvia James—organisation and publicity
- Reg Barrell—Kite Making
- Rehia McDonald—Face Painting
- Lynda Walker—Homebuilders
- Sheryl Tuuta—Homebuilders

**To our volunteers**

- Kindy—Karen Sutherland, story telling
- Manoa & Hayley—face painting
- Barry—Photography
- Karen and Sara—Sport prizes
- Linda—Lolly scramble
- Buller REAP Cathy Moynihan – Toy Library
- Mary and Bob—Music Session

A huge thank you to all the volunteers who helped make Children's Day 2011 the success it was.

